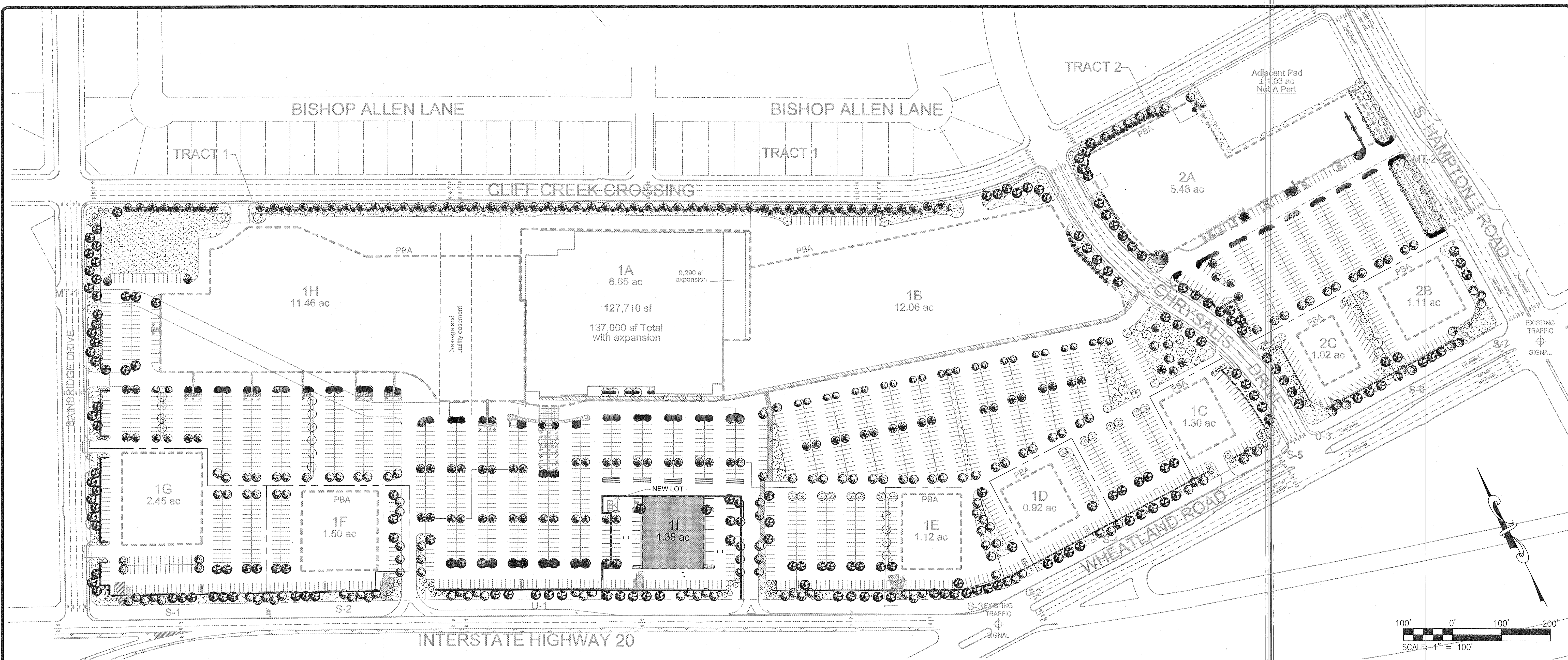


USER: Joe Horvath TAB: L1.1
DATE: September 5, 2019 - 2:14:35 PM
DRAWING: S:\Users\johorvath\OneDrive\Projects\17-0140\DWG\17-0140.dwg



LANDSCAPE TABULATIONS: OUTLOT 1G

SITE TREE REQUIREMENTS
Requirements: (1) tree, 2" cal. min., per 4,000 s.f. of lot area: 100,722 s.f.

Required	Provided
(27) trees, 2" cal.	(56) trees, 3" cal.

STREET REQUIREMENTS
Requirements: (1) tree, 3" cal. min., per 50 l.f. of frontage

Required	Provided
I-20: 356 l.f. Required (14) trees, 3" cal.	(14) trees, 3" cal.

Bainbridge: 314 l.f.
Required
(6) trees

Required	Provided
(10) trees, 3" cal.	(10) trees, 3" cal.

PARKING LOT
Requirement: All parking spaces must be located within 120' of large canopy tree, 2" cal. minimum

Provided

DESIGN REQUIREMENTS
Requirements: Each site shall comply with at least two design requirements in Section 51A-10.126

(2) to be selected from Article X

LANDSCAPE TABULATIONS: OUTLOT 1F

SITE TREE REQUIREMENTS
Requirements: (1) tree, 2" cal. min., per 4,000 s.f. of lot area: 65,350 s.f.

Required	Provided
(16) trees, 2" cal.	(21) trees, 3" cal.

STREET REQUIREMENTS
Requirements: (1) tree, 3" cal. min., per 50 l.f. of frontage

Required	Provided
I-20: 224 l.f. Required (5) trees	(5) trees, 3" cal.

PARKING LOT
Requirement: All parking spaces must be located within 120' of large canopy tree, 2" cal. minimum

Provided

DESIGN REQUIREMENTS
Requirements: Each site shall comply with at least two design requirements in Section 51A-10.126

(2) to be selected from Article X

LANDSCAPE TABULATIONS: OUTLOT 1E

SITE TREE REQUIREMENTS
Requirements: (1) tree, 2" cal. min., per 4,000 s.f. of lot area: 48,797 s.f.

Required	Provided
(12) trees, 2" cal.	(18) trees, 3" cal.

STREET REQUIREMENTS
Requirements: (1) tree, 3" cal. min., per 50 l.f. of frontage

Required	Provided
I-20: 207 l.f. Required (4) trees	(9) trees, 3" cal.

PARKING LOT
Requirement: All parking spaces must be located within 120' of large canopy tree, 2" cal. minimum

Provided

DESIGN REQUIREMENTS
Requirements: Each site shall comply with at least two design requirements in Section 51A-10.126

(2) to be selected from Article X

LANDSCAPE TABULATIONS: OUTLOT 1D

SITE TREE REQUIREMENTS
Requirements: (1) tree, 2" cal. min., per 4,000 s.f. of lot area: 40,075 s.f.

Required	Provided
(10) trees, 2" cal.	(10) trees, 3" cal.

STREET REQUIREMENTS
Requirements: (1) tree, 3" cal. min., per 50 l.f. of frontage

Required	Provided
I-20: 222 l.f. Required (4) trees	(9) trees, 3" cal.

PARKING LOT
Requirement: All parking spaces must be located within 120' of large canopy tree, 2" cal. minimum

Provided

DESIGN REQUIREMENTS
Requirements: Each site shall comply with at least two design requirements in Section 51A-10.126

(2) to be selected from Article X

LANDSCAPE TABULATIONS: OUTLOT 1C

SITE TREE REQUIREMENTS
Requirements: (1) tree, 2" cal. min., per 4,000 s.f. of lot area: 56,626 s.f.

Required	Provided
(14) trees, 2" cal.	(27) trees, 2" cal., 3" cal., 4" cal.

STREET REQUIREMENTS
Requirements: (1) tree, 3" cal. min., per 50 l.f. of frontage

Required	Provided
Wheatland Rd: 200 l.f. Required (4) trees	(5) trees, 3" cal.

Chrysalis Dr: 203 l.f.
Required
(4) trees

Required	Provided
(5) trees, 3" cal.	(5) trees, 3" cal.

PARKING LOT
Requirement: All parking spaces must be located within 120' of large canopy tree, 2" cal. minimum

Provided

DESIGN REQUIREMENTS
Requirements: Each site shall comply with at least two design requirements in Section 51A-10.126

(2) to be selected from Article X

LANDSCAPE TABULATIONS: OUTLOT 2C

SITE TREE REQUIREMENTS
Requirements: (1) tree, 2" cal. min., per 4,000 s.f. of lot area: 44,431 s.f.

Required	Provided
(11) trees, 2" cal.	(25) trees, 2" cal., 3" cal., 4" cal.

STREET REQUIREMENTS
Requirements: (1) tree, 3" cal. min., per 50 l.f. of frontage

Required	Provided
Wheatland Rd: 206 l.f. Required (4) trees	(5) trees, 3" cal.

Chrysalis Dr: 210 l.f.
Required
(4) trees

Required	Provided
(5) trees, 3" cal.	(5) trees, 3" cal.

PARKING LOT
Requirement: All parking spaces must be located within 120' of large canopy tree, 2" cal. minimum

Provided

DESIGN REQUIREMENTS
Requirements: Each site shall comply with at least two design requirements in Section 51A-10.126

(2) to be selected from Article X

LANDSCAPE TABULATIONS: OUTLOT 2B

SITE TREE REQUIREMENTS
Requirements: (1) tree, 2" cal. min., per 4,000 s.f. of lot area: 48,351 s.f.

Required	Provided
(12) trees, 2" cal.	(24) trees, 3" cal.

STREET REQUIREMENTS
Requirements: (1) tree, 3" cal. min., per 50 l.f. of frontage

Required	Provided
Wheatland Rd: 231 l.f. Required (5) trees	(24) trees, 3" cal.

S. Hampton Rd: 210 l.f.
Required
(4) trees

Required	Provided
(6) trees, 3" cal.	(6) trees, 3" cal.

PARKING LOT
Requirement: All parking spaces must be located within 120' of large canopy tree, 2" cal. minimum

Provided

DESIGN REQUIREMENTS
Requirements: Each site shall comply with at least two design requirements in Section 51A-10.126

(2) to be selected from Article X

PLANT LEGEND	
	BALD CYPRESS, 3" cal.
	LIVE OAK, 4" cal.
	CHINESE PISTACHE / CEDAR ELM, 4" cal.
	SHUMARD RED OAK, 3" cal.
	ORNAMENTAL TREE, 8" HT.
	ITALIAN CYPRESS, 12' HT.
	CREPE MYRTLE, 8' ht.
	EASTERN RED CEDAR, 7' ht.
	PARKING LOT SCREENING, 36" HT.
	SHRUB AND GROUNDCOVER BEDS
	LAWN, BERMUDAGRASS SOLID SOD
SITE TREE TREE SUMMARY	
TOTAL TREES REQUIRED: 508	
TOTAL TREES PROVIDED: 761	

LANDSCAPE TABULATIONS: RETAIL PARCEL 1H 11.46 ACRES

SITE TREE REQUIREMENTS
Requirements: (1) tree, 2" cal. min., per 4,000 s.f. of lot area: 499,197.6 s.f.

Required	Provided
(125) trees, 2" cal.	(173) trees, 2" cal., 3" cal., 4" cal.

STREET REQUIREMENTS
Requirements: (1) tree, 3" cal. min., per 50 l.f. of frontage

Required	Provided
Bainbridge: 489 l.f. Required (10) trees	(18) trees, 3" cal.

Cliff Creek: 835 l.f.
Required
(16) trees

Required	Provided
(24) trees	(24) trees, 3" cal.

PERIMETER LANDSCAPE BUFFER STRIP
Requirements: (1) tree, 3" cal. min., & (1) Large non-canopy tree per 50 l.f. of frontage

Required	Provided
Cliff Creek: 835 l.f. Required (16) trees (16) non-canopy trees	(24) trees (22) non-canopy trees

PARKING LOT
Requirement: All parking spaces must be located within 120' of large canopy tree, 2" cal. minimum

Provided

LANDSCAPE TABULATIONS: LOT 1A 8.65 ACRES

SITE TREE REQUIREMENTS
Requirements: (1) tree, 2" cal. min., per 4,000 s.f. of lot area: 377,152 s.f.

Required	Provided
(94) trees, 2" cal.	(144) trees, 2" cal., 3" cal.

STREET REQUIREMENTS
Requirements: (1) tree, 3" cal. min., per 30 l.f. of frontage

Required	Provided
I-20: 469 l.f. Required (15) trees	(17) trees, 3" cal.

Cliff Creek Crossing: 509 l.f.
Required
(20) trees, 3" cal.

Required	Provided
(20) trees, 3" cal.	(20) trees, 3" cal.

PERIMETER LANDSCAPE BUFFER STRIP
Requirements: (1) tree, 3" cal. min., & (1) Large non-canopy tree per 50 l.f. of frontage

Required	Provided
Cliff Creek: 509 l.f. Required (17) trees (17) non-canopy trees	(23) trees (23) non-canopy trees

PARKING LOT
Requirement: All parking spaces must be located within 120' of large canopy tree, 2" cal. minimum

Provided

LANDSCAPE TABULATIONS: OUTLOT 1I 1.35 AC

SITE TREE REQUIREMENTS
Requirements: (1) tree, 2" cal. min., per 4,000 s.f. of lot area: 56,626 s.f.

Required	Provided
(19) trees, 2" cal.	(23) trees (4) proposed @ 3" cal. (19) existing @ 8"-10" cal.

STREET REQUIREMENTS
Requirements: (1) tree, 3" cal. min., per 50 l.f. of frontage

Required	Provided
I-20: 282 s.f. Required (6) trees	(10) trees (4) Existing @ 10" cal. (6) Existing @ 8" cal.

PARKING LOT
Requirement: All parking spaces must be located within 120' of large canopy tree, 2" cal. minimum

Provided

DESIGN REQUIREMENTS
Requirements: Each site shall comply with at least two design requirements in Section 51A-10.126

(2) to be selected from Article X (see below)

1. Screening of off-street parking
2. Foundation planting strip

LANDSCAPE TABULATIONS: OUTLOT 11 1.35 AC

SITE TREE REQUIREMENTS
Requirements: (1) tree, 2" cal. min., per 4,000 s.f. of lot area: 56,626 s.f.

Required	Provided
(19) trees, 2" cal.	(23) trees (4) proposed @ 3" cal. (19) existing @ 8"-10" cal.

STREET REQUIREMENTS
Requirements: (1) tree, 3" cal. min., per 50 l.f. of frontage

Required	Provided
I-20: 282 s.f. Required (6) trees	(10) trees (4) Existing @ 10" cal. (6) Existing @ 8" cal.

PARKING LOT
Requirement: All parking spaces must be located within 120' of large canopy tree, 2" cal. minimum

Provided

DESIGN REQUIREMENTS
Requirements: Each site shall comply with at least two design requirements in Section 51A-10.126

(2) to be selected from Article X (see below)

1. Screening of off-street parking
2. Foundation planting strip

LANDSCAPE TABULATIONS: RETAIL PARCEL 12.06 ACRES

SITE TREE REQUIREMENTS
Requirements: (1) tree, 2" cal. min., per 4,000 s.f. of lot area: 525,333 s.f.

Required	Provided
(131) trees, 2" cal.	(181) trees, 2" cal., 3" cal., 4" cal.

STREET REQUIREMENTS
Requirements: (1) tree, 3" cal. min., per 50 l.f. of frontage

Required	Provided
I-20: 200 l.f. Required (4) trees	(5) trees, 3" cal.

Cliff Creek: 600 l.f.
Required
(12) trees

Required	Provided
(11) trees, 3" cal.	(11) trees, 3" cal.

PERIMETER LANDSCAPE BUFFER STRIP
Requirements: (1) tree, 3" cal. min., & (1) Large non-canopy tree per 50 l.f. of frontage

Required	Provided
Cliff Creek: 600 l.f. Required (12) trees (12) non-canopy trees	(15) trees (15) non-canopy trees

PARKING LOT
Requirement: All parking spaces must be located within 120' of large canopy tree, 2" cal. minimum

Provided

LANDSCAPE TABULATIONS: RETAIL PARCEL 5.48 ACRES

SITE TREE REQUIREMENTS
Requirements: (1) tree, 2" cal. min., per 4,000 s.f. of lot area: 238,709 s.f.

Required	Provided
(60) trees, 2" cal.	(79) trees, 2" cal., 3" cal., 4" cal.

STREET REQUIREMENTS
Requirements: (1) tree, 3" cal. min., per 50 l.f. of frontage

Required	Provided
S. Hampton Rd: 577 l.f. Required (12) trees	(21) trees, 3" cal.

Chrysalis Dr: 757 l.f.
Required
(15) trees

Required	Provided
(18) trees, 3" cal.	(18) trees, 3" cal.

PERIMETER LANDSCAPE BUFFER STRIP
Requirements: (1) tree, 3" cal. min., & (1) Large non-canopy tree per 50 l.f. of frontage

Required	Provided
Cliff Creek: 297 l.f. Required (6) trees (6) non-canopy trees	(8) trees (6) non-canopy trees

PARKING LOT
Requirement: All parking spaces must be located within 120' of large canopy tree, 2" cal. minimum

Provided

** OVERALL PLAN BY OTHERS

DEVELOPER/OWNER:
PANERA, LLC
3630 SOUTH GEVER ROAD, SUITE 100
ST. LOUIS, MO 63127
(314) 984-2646

ST. LOUIS
3630 South Geyer Road, Suite 100
St. Louis, MO 63127
(314) 984-2646

PROPOSED LANDSCAPE PLAN

DESIGN/CALC BY
CAW

DRAWN BY
CAW

CHECKED BY
CAW

DRAWING SCALE

DATE
06/01/2019

Job Number
17-0140

Sheet Number
L1.1